



We have made  
the No.1  
even better!



## GC Pattern Resin LS

Low Shrinkage Modelling Resin

Added value due to:  
Excellent workability  
Minimum shrinkage  
Optimal fit  
Economical usage

**GC**

## Demands

High precision dental technology is hardly imaginable without a safe and reliable modelling resin. Dimensional stability in each single manufacturing step – even over longer periods of time – are a prerequisite for the perfect fit of restorations.

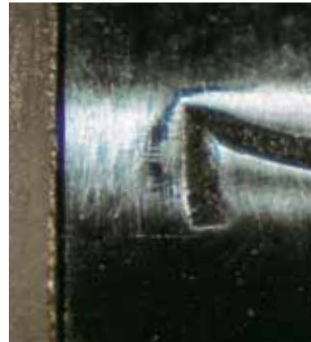
Accuracy, mechanical strength and easy handling in any chair-side or laboratory situation – all of these demands need to be met to support technicians and dentists in their daily work.

## The Objective

An ideal modelling resin should have the following properties:

- Excellent flow characteristics
- Short setting time
- Long working time
- Easy handling
- Time-saving application
- Universal usage
- High dimensional stability
- High mechanical strength
- Low costs
- Proven quality

↓  
Insufficient fit  
of test specimen



↑  
Perfect fit with  
Pattern Resin LS

## The Result

Pattern Resin LS meets all of these demands on an up-to-date self-curing modelling resin. This material was especially developed for the brush technique.

The outstanding mechanical and handling properties, universal application and economical usage of Pattern Resin LS supports dental technicians and dentists in their everyday work.

And finally the excellent fit of the cast restoration speaks for itself.

# GC Pattern

Low Shrinkage

## The Technique

Pattern Resin LS is the first product developed for the brush technique.

The thixotropy of the resin results in excellent flow behaviour and handling properties, its high wettability allows easy mixing and application.

### The Brush Technique – Step-by-Step:

- Dispense powder and liquid in the respective mixing cups
- Moisten the brush and dip into the powder
- Apply the mixture in small portions and spread evenly on the surface
- When applied on metal surfaces no wetting agent is required
- At the inside of the pattern you will find the same smooth and shining surface as in the crown



Build-up of a telescopic crown pattern using the brush technique



After replacement make fine adjustments of the pattern with a suitable instrument



Pattern inside shows the smooth and shining surface of the primary crown



The casting result



### Physical properties

Working time (23° C)	2-3 min
Setting time (23° C)	4 min
Flexural strength (37° C after 10 min)	63 MPa
Polymerization shrinkage after 30 min	0,36 %
Polymerization shrinkage after 24 h	0,37 %

## Indications

In addition to all conventional indications for modelling resins, Pattern Resin LS provides superior results in the following applications:

- Custom attachments
- Conical and telescopic crowns
- Implant suprastructures
- Implant transfer techniques
- Crown & Bridge techniques
- Inlays and Onlays
- Partial dentures
- Electroforming techniques

## Features and Benefits

- Specially developed for the brush technique
- Minimal shrinkage for high precision modelling and optimal fit of restorations
- Perfect handling for easily controlled build-up and convenient shaping and milling
- High hardness and strength, no distortion even when applied in thin layers
- Burns out without residues, provides homogenous, smooth surfaces
- Material can be applied directly on the insulated die

# Resin LS

Modelling Resin

## Universal Usage – Case Presentations

Pattern Resin LS is a long-term proven material for a wide range of chair-side and laboratory indications. Besides the major applications this unique modelling resin is suitable for a great number of everyday "detail" situations.

If you wish to learn more about this highly versatile material we have compiled technical information, step-by-step instructions and case presentations in a new manual dealing exclusively with Pattern Resin LS.



Telescopic crown with perfect fit on the primary crown



Attachment technique



Implant transfer template



Passive-fitting cast-on pontic in electroforming technique



Ask for "Tips & Tricks" Technique and Handling of Pattern Resin LS.

# GC Pattern Resin LS

Low Shrinkage Modelling Resin

## Packaging:

1-1 Package:  
100 g Powder  
105 ml Liquid  
Accessories



## Refills:

100g Powder  
1 kg Powder  
105 ml Liquid  
262 ml Liquid  
10 Brushes No. 4  
5 Mixing Cups

### GC EUROPE N.V.

Head Office  
Interleuvenlaan 33  
B - 3001 Leuven  
Tel. +32.16.74.10.00  
Fax. +32.16.40.48.32  
info@gceurope.com  
www.gceurope.com

### GC UNITED KINGDOM Ltd.

12-15, Coopers Court  
Newport Pagnell  
UK - Bucks. MK16 8JS  
Tel. +44.1908.218.999  
Fax. +44.1908.218.900  
info@uk.gceurope.com  
www.uk.gceurope.com

