



# Transform the way you work

Start injecting with our strongest  
direct restorative ever

**G-ænial® Universal  
Injectable**



**3M**



# Welcome to the future

**G-ænial Universal Injectable** is destined to be a game-changer in restorative dentistry. With its unique characteristics it will truly transform the way you work.

World-leading technologies have enabled GC to define a new benchmark composite offering **exceptional strength, unsurpassed polishability** and fantastic, tooth-blending aesthetics.

But you'll be amazed at how it is **injectable and shapeable all at the same time**. It adapts perfectly to the cavity floor, but lets you build, shape and contour while you are injecting – because **G-ænial Universal Injectable** doesn't slump!

It will also save you time and money because placement is so much faster and because you don't waste any material at all – you only use what is needed.

Try it for yourself and embrace the future!  
You'll never look back.

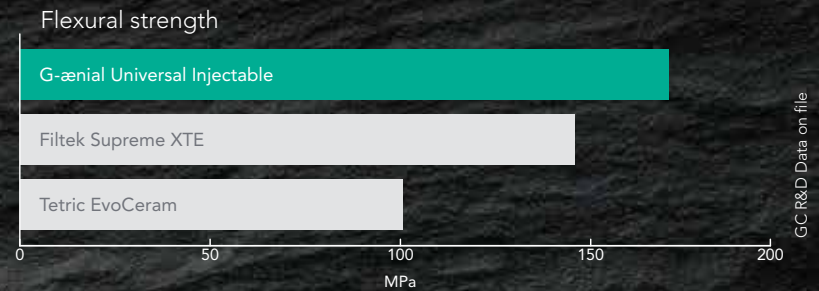




Exceptional  
strength  
and wear  
resistance

## Our strongest direct restorative ever\*

GC's world-leading filler technologies have allowed us to develop an injectable material that is significantly stronger than most conventional paste composite materials. It's a new paradigm in thinking that a composite with a more flowable consistency is actually your strongest option!



*Filtek Supreme XTE & Tetric EvoCeram are not trademarks of GC.*

3 steps in 1 -  
shape and contour  
as you inject

## Inject, shape and contour all at once

Because **G-ænial Universal Injectable** doesn't slump or string, you have total control to adapt, shape and contour as you inject for fast, effortless restorations. It adapts perfectly to the cavity floor and allows you to easily build contours, cusps and even proximal walls.



Unsurpassed  
polishability  
with beautiful  
aesthetics

Universal  
application  
for all cavity  
classes

Faster  
placement  
time with no  
wastage



\*based on ISO 4049 testing

# 3 in 1 Technologies

Ultra-fine  
fillers

+

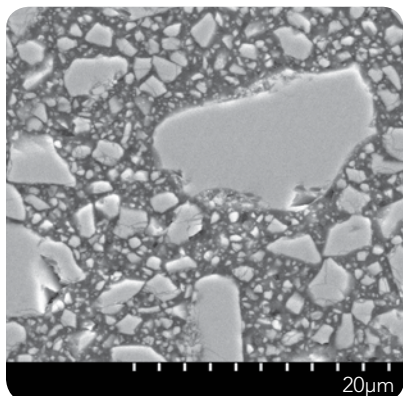
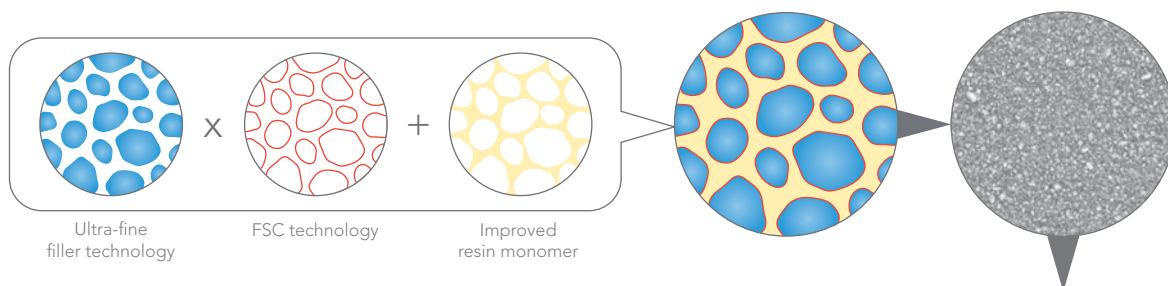
Full silane  
coating

+

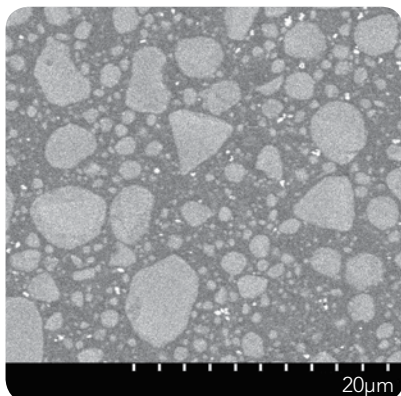
Improved  
resin  
monomer

## World-leading innovation and technology

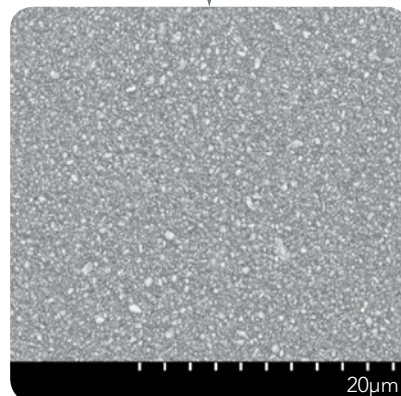
Our latest full-coverage silane coating (FSC) technology makes it possible to homogeneously and densely disperse ultra-fine 150nm fillers in the improved resin monomer matrix giving unparalleled strength, durability and energy-absorbing resilience with high radiopacity – 252% Al.



**Micro Hybrid** – Typically contains a range of glass and nano fillers of varying sizes



**Nano composite** – Typically contains spherical nano clusters made up of agglomerated nano fillers of varying sizes



**G-aenial Universal Injectable** – Ultra-fine 150nm homogeneously dispersed glass fillers

## Innovative syringe design delivers with ease and no slumping

With effortless extrusion, our new syringe is a joy to use - and the bendable tips make precise delivery easy.





# 3 in 1 Benefits

Exceptional strength

+

Unsurpassed surface integrity

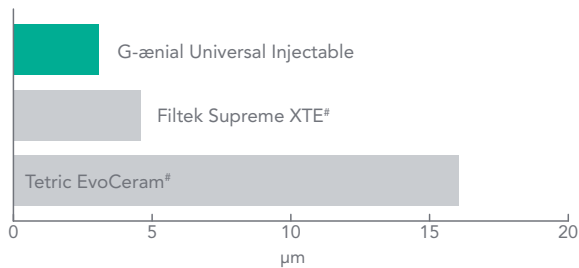
+

Long lasting aesthetics

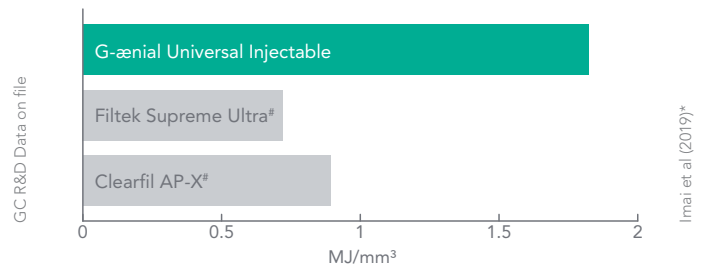
## Superior strength, wear resistance and polish retention

G-ænial Universal Injectable's high-density structure not only provides exceptional strength, but also greater wear resistance, unmatched high polish retention and high resistance to discoloration for long-lasting aesthetics.

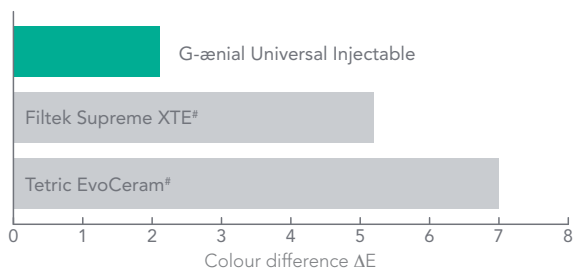
### 3-body wear



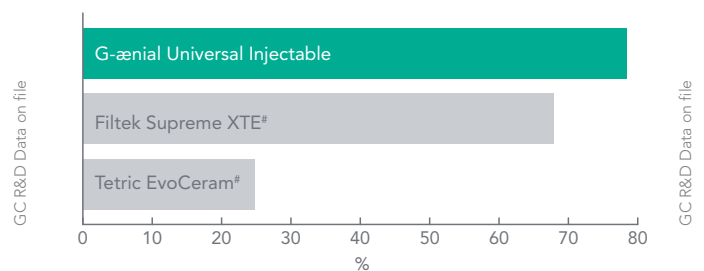
### Resilience (Toughness)



### Discolouration (at 7 days, 2% coffee solution)



### Gloss Retention (After toothbrush wear – 12,000 cycles)



# 3 in 1 Savings

Less time

+

No waste

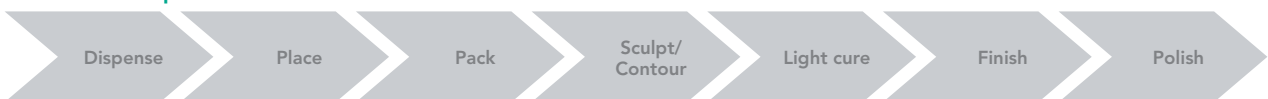
+

Less stress

## Save time, save material, save stress

With far fewer steps than conventional composite, the time savings for restorations are significant. G-ænial Universal Injectable also eliminates wastage. You only use what you need! And because G-ænial Universal Injectable doesn't string or slump the whole process is easier and the end result is less stress in your day.

### Conventional pastes



### G-ænial Universal Injectable



# Not trademarks of GC Corporation

\* Interrelation among the handling, mechanical, and wear properties of the newly developed flowable resin composites. Imai et al. Journal of the Mechanical Behavior of Biomedical Materials 89 (2019) 72–80

# Case Studies

## Class II restoration



1. Removal of the old restoration & caries removal



2. Undercuts can easily be reached thanks to the bendable tips



3. Building the proximal wall using the enamel shade JE



4. Removal of the sectional matrix after building the wall



5. A class I procedure can now be followed; the dentin layer is created with the A4 shade



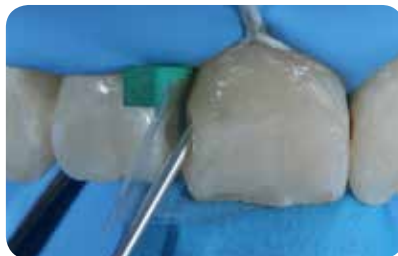
6. Final situation after finishing and polishing of the margins

Dr Javier Tapia Guadix – Spain

## Class III restorations



1. Initial Class III cavities.



2. Injecting G-aenial Universal Injectable (A2).



3. Recall situation showing perfect integration.

Dr Ahmed Al-Jaff, Iraq

## Management of early worn dentition



1. Early wear evident on 40-year old patient needing conservative management.



2. Old composite restorations removed and teeth micro-etched. Build up and restorations on the occlusal surface using alternate teeth technique.



3. Final restorations using a single shade injection technique, shade A1.

Dr Anthony Mak – Australia

## Injection moulding technique



1. Model with wax-up of the desired tooth shape.



2. An impression tray is filled with EXACLEAR.



3. The desired shape is copied. The mould can be easily removed from the impression tray and the model.



4. Holes are drilled in the EXACLEAR mould through which the composite will be injected.



5. Etching the enamel.



6. Application of the adhesive (G-Premio BOND).



7. Injection of the composite into the mould. This process is repeated for each tooth.



8. Finishing the vestibular and palatal margins.



9. Finishing the approximal margins.



10. Polishing the composite restorations.



11. Result after polishing.



12. Smile after treatment.

# G-ænial® Universal Injectable from GC

## Transform the way you work



"This material adapts beautifully and it retains cusp form without slumping"

"I was surprised at how well it flowed into deep restorations"

"Cuts restoration time very significantly and drastically reduces finishing time"

Dental Advisor vol. 35 No. 06 Nov/Dec 2018

### Packages:

#### Syringe Refill

1x Syringe 1.7g (1.0 ml),  
10x Dispensing Tip Long Needle, 1x Light-protective Cap

#### Dispensing Tip Refill

30x Dispensing Tip Long Needle

**DA DENTAL ADVISOR**  
Product insights you can trust.



### Shades:

A1, A2, A3, A3.5, A4, B1, B2, CV, CVD, XBW, BW, AO1, AO2, AO3, JE, AE



**GC EUROPE N.V.**  
Head Office  
Researchpark  
Haasrode-Leuven 1240  
Interleuvenlaan 33  
B-3001 Leuven  
Tel. +32.16.74.10.00  
Fax. +32.16.40.48.32  
info.gce@gc.dental  
http://www.gceurope.com

**GC UNITED KINGDOM Ltd.**  
Coopers Court  
Newport Pagnell  
UK-Bucks. MK16 8JS  
Tel. +44.1908.218.999  
Fax. +44.1908.218.900  
info.uk@gc.dental  
http://uk.gceurope.com



Since 1921  
Towards Century of Health