

GC Fuji II LC Restoration Technique

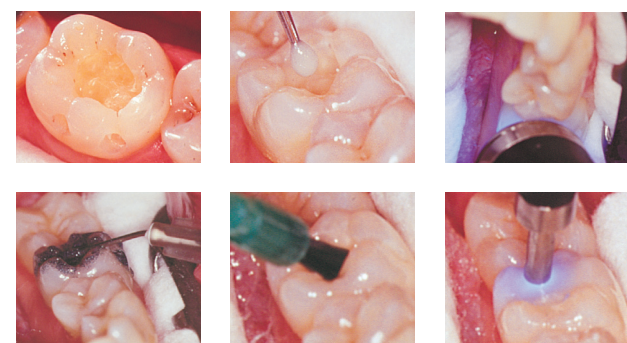
Easy Fuji II LC Restoration Technique

- Simply prepare the cavity and apply GC Cavity Conditioner to remove the smear layer and seal the dentin tubules.
- Place the mixed Fuji II LC into the cavity.
- Light cure, trim and finish.



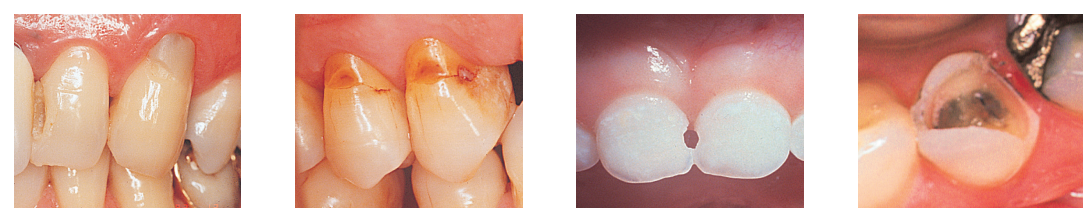
Simple Sandwich Technique

- Use Fuji II LC as a base or liner to prevent marginal leakage, provide superior fluoride release and eliminate sensitivity.
- Prepare cavity, apply GC Cavity Conditioner for 10 seconds and rinse.
- Place mixed Fuji II LC as a base or liner, then light cure.
- Use your composite bonding system in the usual manner and finish the restoration with a tooth colored restorative.



Restoration with Fuji II LC

Before



Class III and V

Cervical erosion

Pedodontic
restoration

Base or Liner

After



GC Fuji II LC World's leading Light-cured Glass Ionomer Restorative



GC Fuji II LC P/L

900018	Intro Package, 3-2 Pack. (3 x 15 g powder: A2, B3, B3, 2 x 6.8 ml liquid)
000195	A1, 15 g powder
000196	A2, 15 g powder
000197	A3, 15 g powder
000198	A3.5, 15 g powder
000199	A4, 15 g powder
000200	B2, 15 g powder
000201	B3, 15 g powder
000202	B4, 15 g powder
000203	C2, 15 g powder
000204	C4, 15 g powder
000205	D2, 15 g powder
000206	6.8 ml liquid

GC Fuji II LC Capsule

000137	Assortment, box of 50 capsules (A4, B2, B3, B4, C2, C4, D2)
000138	A1, box of 50 capsules
000139	A2, box of 50 capsules
000140	A3, box of 50 capsules
000141	A3.5, box of 50 capsules
000142	A4, box of 50 capsules
000143	B2, box of 50 capsules
000144	B3, box of 50 capsules
000145	B4, box of 50 capsules
000146	C2, box of 50 capsules
000147	C4, box of 50 capsules
000148	D2, box of 50 capsules

GC G-Coat PLUS

002583	Starter Kit, Bottle (bottle of 4 ml, 20 dispensing dishes, 50 micro-tips applicator & 1 applicator holder)
--------	--

Accessories

Capsule Applier IV

0002559	Capsule Applier IV
---------	--------------------

Cavity Conditioner

000110	5.7 ml liquid
--------	---------------

GC EUROPE N.V.
Head Office
Researchpark
Haasrode-Leuven 1240
Interleuvenlaan 33
B - 3001 Leuven
Tel. +32.16.74.10.00
Fax. +32.16.40.48.32
info@gceurope.com
http://www.gceurope.com

GC UNITED KINGDOM Ltd.
12-15, Coopers Court
Newport Pagnell
UK - Bucks. MK16 8JS
Tel. +44.1908.218.999
Fax. +44.1908.218.900
info@uk.gceurope.com
http://uk.gceurope.com

GC

zOLFEN2 13 10/10



Started In 1992,
the world's first ever
light cured GIC
continues its story of
success.

Fuji II LC
from **GC.**
Living
innovation.

Light cured Resin Reinforced Glass Ionomer Restorative,
available in 11 shades.

GC

Elegantly simple technique.
Beautifully long-lasting results.



GC Fuji II LC - Resin Modified Glass Ionomer Restorative

Clinically proven Fuji II LC restorative brings you all the advantages of a conventional glass ionomer - plus important advances like **dual curing, immediate finishing and outstanding aesthetics**. With its simple, time-saving technique, Fuji II LC is the ideal solution for Class III & Class V restorations, particularly cervical erosion / abfractions and root surface restorations.^{1,2}

Used as a base or liner in a sandwich technique³, Fuji II LC makes any restoration last longer by preventing marginal leakage⁴, eliminating sensitivity and providing **superior fluoride release many times more than competitors**.

Different Delivery Systems, Same Great Results

For the ultimate convenience and precise delivery, choose Fuji II LC Capsules. They're easy to use, with no hand mixing or mess. Just mix 10 seconds for the ideal viscosity, place into the capsule applicator and dispense the material. Fuji II LC is also available in a powder-liquid form representing an outstanding value for money. Whatever form you choose, finishing and polishing can be completed immediately after light curing for beautiful aesthetic results.

Why Choose GC Fuji II LC?

Outstanding Translucency and Aesthetics

With 11 Vita shades, colour matching is quick and easy. Excellent translucency allows Fuji II LC to blend with patients' natural tooth colour for lifelike results every time.

Proven Clinical Performance – 100 % Retention after 5 Years⁵

Fuji II LC offers you a clinical performance which has been proven in numerous scientific studies as well as by many years of use in dental practices and hundred of thousands of restorations all over the world.

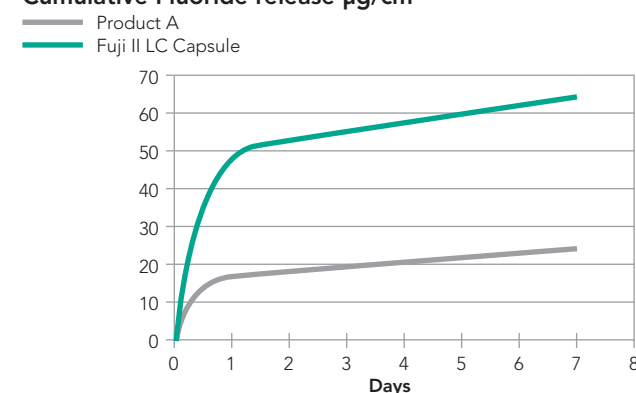
No Sensitivity - pulp-protective

Fuji II LC is clinically proven to eliminate existing pre-operative sensitivity and postoperative sensitivity. It not only expands and contracts similar to tooth structure, it actually becomes a pulp-protective thermal insulator.⁵

Superior Fluoride Protection

Unlike products with fluoride additives, Fuji II LC offers clinically significant fluoride protection⁶. Its rechargeable fluoride release and excellent marginal seal help provide remineralisation. And research has shown that high fluoride release into the tooth helps prevent recurrent decay⁷, making Fuji II LC the ideal choice for paediatric and geriatric restorations and patients with rampant caries and multi-level treatment needs.⁸

Cumulative Fluoride release $\mu\text{g}/\text{cm}^2$

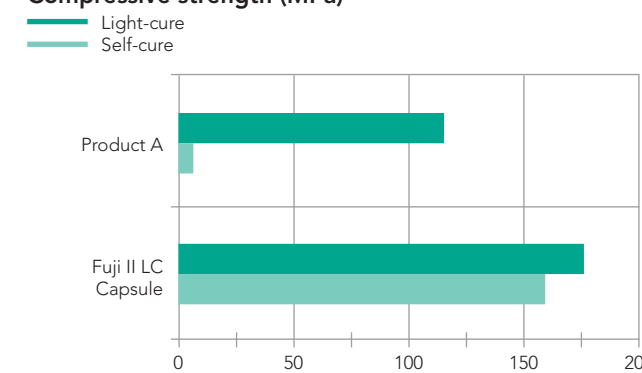


Superior Physical Properties & Handling

With micro-mechanical reinforcement and dual curing, Fuji II LC provides an outstanding chemical bond to tooth structure⁹ - with high compressive, tensile and flexural strengths for long-term durability¹⁰. It has a tooth-like coefficient of thermal expansion and is clinically insoluble, minimizing the likelihood of micro leakage and washouts.⁴

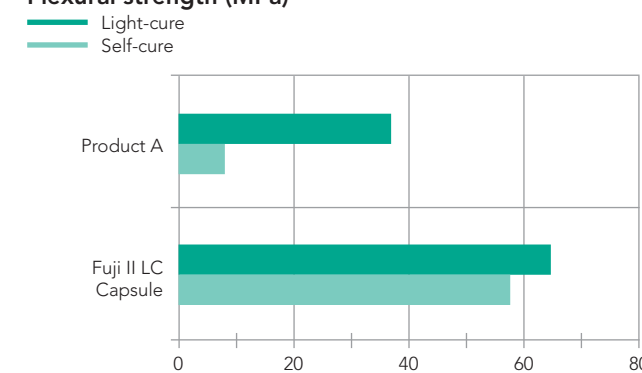
With Fuji II LC, there's no need for bonding agents, no drying or waiting, no undercuts or mechanical retention. Its consistency makes it easy to place and like all glass ionomers, Fuji II LC works perfectly in a moist environment, so no need for rubber dam.

Compressive strength (MPa)



Fuji II LC Shows high compressive strength both in Self-cure and Light-cure mode. Source: GC R&D Internal Data

Flexural strength (MPa)



The good flexural strength of Fuji II LC ensures long term durability
Source: GC R&D Internal Data

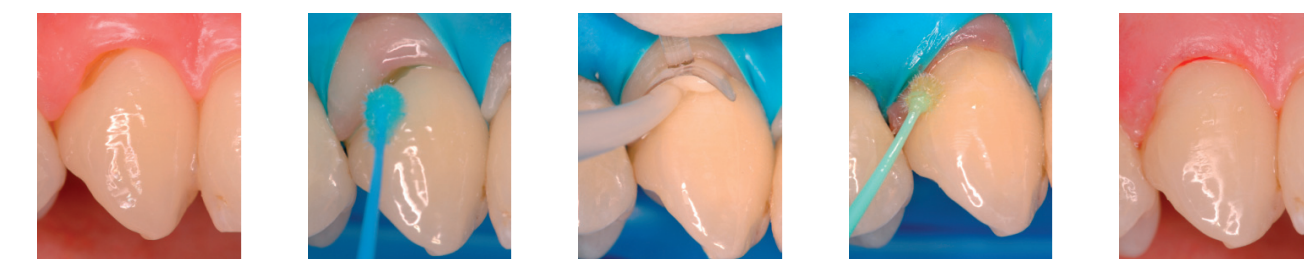
Why Choose GC Fuji II LC with G-Coat PLUS?

Protection

Introducing G-Coat PLUS - the first ever nano-filled varnish based upon a unique chemical formula which guarantees the nano-particles are distributed very evenly. G-Coat PLUS prevents the initial sensitivity to water and protects the tooth and restoration margins against long-term leakages and discolouration. G-Coat PLUS requires only one application, and light-curing with all types of VLC units (halogen, LED or plasma) is possible.

Superior aesthetics

G-Coat PLUS also improves the aesthetic properties of the restorative material, making the restoration smooth for patient's comfort and shiny in only 30 seconds. Spending time on complex polishing procedures is not needed any more. The coating is designed to wear off uniformly after several months. It then uncovers a material showing a unique maturation effect attributed to saliva, which has a hardness like modern universal posterior composites.



- Brackett, et al. 1-year clinical evaluation of Compoglass and Fuji II LC in cervical erosion / abfraction lesions. Am J Dent 1999; 12(3):119-22.
- Burrow MF, Tyas MJ., Clinical evaluation of three adhesive systems for the restoration of non-carious cervical lesions, Oper Dent. 2007 Jan-Feb;32(1):11-5.
- Besnault C, Attal JP., Simulated oral environment and micro leakage of Class II resin-based composite and sandwich restorations. Am J Dent. 2003 Jun;16(3):186-90.
- Toledano M et al., Microleakage of Class V resin-modified glass ionomer and compomer restorations, J Prosthet Dent. 1999 May; 81(5):610-5.
- Boghosian, et al. Clinical evaluation of a resin-modified glass ionomer restorative: 5-year results. J Dent Res 1999; 78:285
- Eronat N, Kocatas N, Alpöz AR., A comparative study of fluoride uptake from dentin bonding agents and glass-ionomer cements in permanent and primary tooth enamel, Quintessence Int. 1999 Jul;30(7):496-500.
- Torii Y, et al., Inhibition of artificial secondary caries in root by fluoride-releasing restorative materials, Oper Dent. 2001 Jan-Feb; 26(1):36-43.
- Lo EC et al., ART and conventional root restorations in elders after 12 months., J Dent Res. 2006 Oct;85(10):929-32
- Suwatviroj P et al., Micro tensile bond strength of tooth-coloured materials to primary tooth dentin, Pediatr Dent. 2004 Jan-Feb;26(1):67-74.
- GC Corp R&D, 2007