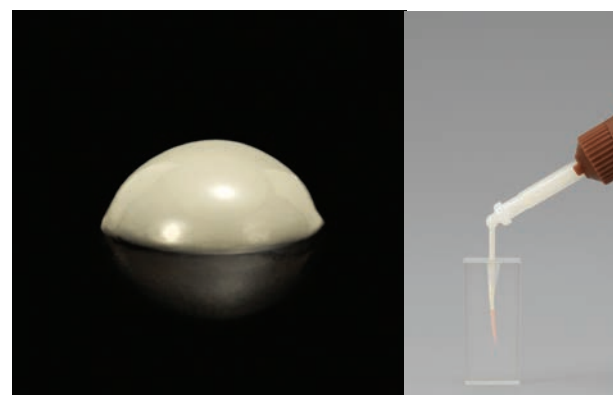


Optimal handling

Gradia Core and **GC Fiber Post** offer you several advantages in handling, making them your ideal partners for high quality restorations.

- **Easy bonding with reduced steps:**
The **Gradia Core** self-etching dual cure bonding system employs a simplified one-step application.
- **Comfortable dispenser and cartridge system:**
Thanks to very small extension tips, the material can be dispensed in a precise manner, avoiding waste.
- **Luting and core build-up with 1 material:**
With adapted viscosities and thixotropic behavior, **Gradia Core** will flow under pressure during post luting, but will remain fixed in position during core building.

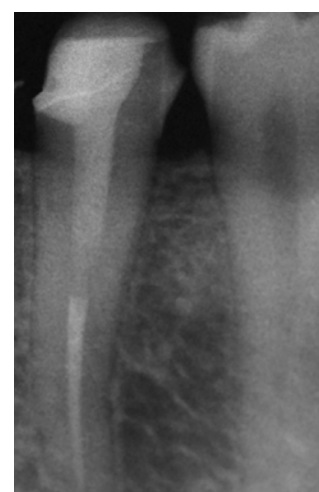


Perfect Fluidity for Post Luting



Ideal Thixotropy for Core Build-up

- **Cutting feeling similar to dentin:**
Due to its filler content, the material mimics natural dentin when cutting. Finishing becomes easier with smooth edges at the interface between the tooth structure and core material.
- **Work at your own pace:**
Gradia Core offers ideal working and setting times, whether in light or dual-cure modes. Very effective initial curing means that the finishing phase can already start from 5 minutes after application.
- **Radiopacity:**
GC Fiber Post and **Gradia Core** are both uniquely adapted for an easy x-ray monitoring. **Gradia Core** has a radiopacity that is superior to enamel.



Dr. D'Incau

Packaging

GC Gradia Core and **GC Fiber Post** are available in a selection of convenient packages to suit the needs of your practice.



GC GRADIA CORE

GC Gradia Core Kit

1 **GC Gradia Core** Cartridge 10mL (20g); 1 Self-Etching Bonding Liquid A 3 mL; 1 Self-Etching Bonding Liquid B 1,5 mL; 20 Automix tips, 20 endo extension tips, 1 Dappen Dish; 1 holder with 25 Micro Tip Applicator

GC Gradia Core Intro Package

1 **GC Gradia Core** Kit; 1 Cartridge Dispenser

Refills

GC Gradia Core Cartridge refill: 1 **Gradia Core** Cartridge 10 mL (20g), 20 Automix tips, 20 endo extension tips; **GC Gradia Core** Self-Etching Bond Liquid A Refill; 3mL bottle; **GC Gradia Core** Self-Etching Bond Liquid B Refill; 1,5 mL bottle

Accessories

GC Gradia Core Cartridge Dispenser, 1 piece

GC FIBER POST

GC Fiber Post Assortment kit

15 **Fiber Posts**: 5 of 1.0mm, 5 of 1.2 mm, 5 of 1.4 mm; 2 **Drills**: 1 of 1.2 mm, 1 of 1.4 mm

GC Fiber Post Intro Package

1 **GC Fiber Post** Assortment Kit; 1 Ceramic Primer

Refills

GC Fiber Post Refill; 10 Fiber Posts in unit dose blister available in size 0.8; 1.0; 1.2; 1.4; 1.6; **GC Fiber Post** Drill Refill; 1 piece available in size 1.2; 1.4; 1.6; **GC Fiber Post** Drill Refill; 1 piece available in size 1.2; 1.4; 1.6; **GC Ceramic Primer**: 2 Bottles with 2 mL of liquid each

System

GC Gradia Core and GC Fiber Post Complete system

1 **GC Fiber Post** Assortment Kit; 1 Ceramic Primer; 1 **GC Gradia Core** Kit; 1 **GC Gradia Core** Cartridge Dispenser

GC UNITED KINGDOM Ltd. 12-15, Coopers Court Newport Pagnell UK - Bucks. MK16 8JS
Tel. +44.1908.218.999 Fax. +44.1908.218.900 info@uk.gceurope.com <http://uk.gceurope.com>

GC EUROPE N.V. Head Office Researchpark Haasrode-Leuven 1240 Interleuvenlaan 33 B - 3001 Leuven
Tel. +32.16.74.10.00 Fax. +32.16.40.48.32 info@gceurope.com <http://www.gceurope.com>

z O L F 8 6 4 EN 04/12

Gradia Core™
and **Fiber Post™**
from **GC.**

Complete system
for aesthetic
core build-up
and post luting
in only one sitting.