

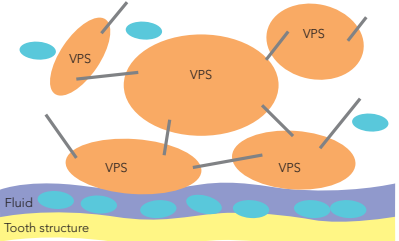
Why VPES™ ?

The rationale for the development of EXA'lence was to **take dentistry to a new level with distinctively predictable impressions.**

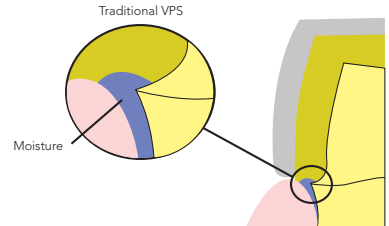
A common problem related to impression taking is the inability to control bleeding or crevicular fluid from the prepared teeth.

In traditional VPS materials, a surfactant is added to make the inherently hydrophobic material act in a hydrophilic manner. In reality, the surfactant tends to leach out when it comes into contact with moisture, which may cause poor flow, gaps or bubbles.

The inherent hydrophilicity and wettability of EXA'lence will enable you to **capture the finest details of the tooth surface, even in a moist environment.**

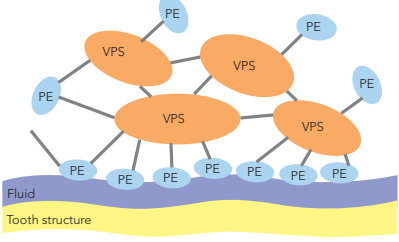


Surface active agents are released from the surface during setting

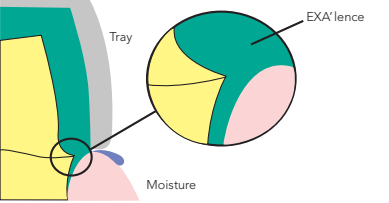


Clinical consequence: during intra-oral setting hydrophilic A-silicone is repelled from moist surfaces

In GC's new VPES™ material, **hydrophilicity occurs during the material setting time**, which allows it to capture all the finest details.

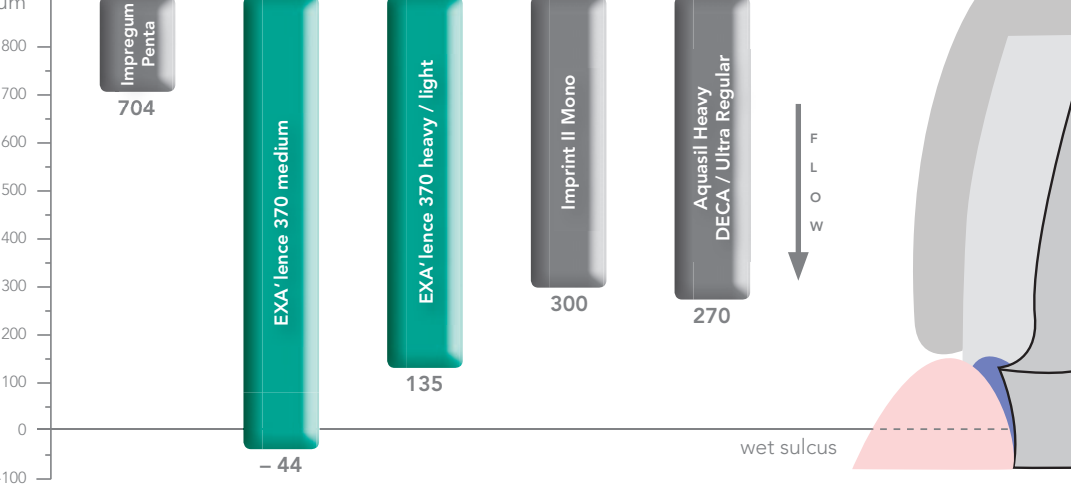


New chemistry avoids diffusion of the fully integrated hydrophilic component



Clinical consequence: during intra oral setting EXA'lence is attracted by the moist surface and comes into close contact with the tooth surface

An independent study showing EXA'lence giving the best results in wet conditions.¹ EXA'lence flows deeply into the sulcus, even in wet conditions.



For more info and statistical details check below website:
<http://iadr.confex.com/iadr/2010barce/webprogramcd/Paper136438.html>

¹477 Wetting behaviour of Polyvinylsiloxane-Polyethers in Semi Clinical Model (CCIB), B. WÖSTMANN¹, M. ZENGINEL¹, P. REHMANN¹, and M. BALKENHOL², ¹Justus-Liebig-University, Giessen, Germany, ²Justus-Liebig-University Giessen, Giessen, Germany

Packaging

EXA'lence 48 mL Cartridge
Refill: 2x 48 mL Cartridge and 6 Mixing tips in Fast or Regular Setting
Available in the following viscosities: Extra Light Body, Light Body, Medium Body (Monophase), Heavy Body and Heavy Body Rigid

EXA'lence Putty
Standard Pack: 500 g (278 mL) base + 500g (278 mL) catalyst + accessories
Clinic Pack: 5 x 500 g (278 mL) base + 5 x 500g (278 mL) catalyst + accessories

GC Europe has a number of EXA'lence Technik Kits available that combine the materials you need for your preferred impression taking technique. Ask your GC representative for more details.

900473 GC EXA'lence, Technic Kit Monophase 370 mL
1x 370 ml Cartridge Medium Body (Monophase), 10x Dynamic Mixing Tips, 1x Bayonet Locking Ring, 1x Tray Adhesive Bottle

900474 GC EXA'lence, Technic Kit Wash Heavy 370 mL
1x 370 ml Cartridge Heavy Body Fast, 10x Dynamic Mixing Tips, 1x Bayonet Locking Ring, 1x 48 ml Cartridge Light Body Fast, 1x 48 ml Cartridge Extra Light Body Fast, 12x Mixing Tips, 1x Box Impression Separation Wafers, 12x intra-oral Tips, 1x Adhesive Tray

Related Products

Dynamic Mixer
EXA'lence is perfectly compatible with a wide range of mixing devices, making it a streamlined investment for the dental practice without the need for additional equipment purchase.



GC Universal Dispenser II
Universal dispenser for all GC impression and relining materials in cartridges.

GC Trays
To ensure restorations fit first time, it is of paramount importance to choose the right tray. Whether you are looking for a dentulous, edentulous or closed-bite tray, we have exactly the tray that fits your requirements. After all, GC offers the widest range of stock trays available in Europe.

GC Impression Separation Wafer
To improve your impression taking procedures we have developed the Impression Separation Wafer system, an easy technique to create a „custom“ tray by using a stock tray.



EXA'lence 370
Standard Kit: 1 x 370 mL Cartridge + 10 Dynamic Mixing Tips + 1 Bayonet Locking Ring in Regular and Fast Setting, in Heavy Body and Medium Body viscosities
Refill: 2 x 370 mL Cartridges in Regular and Fast Setting, in Heavy Body and Medium Body viscosities
Clinical Pack: 6 x 370 mL Cartridges in Regular and Fast Setting, in Heavy Body and Medium Body viscosities

Mixing Tips, 1x Bayonet Locking Ring, 12x Mixing Tips, 12x intra-oral Tips, 1x Adhesive Tray

900472 GC EXA'lence, Technic Kit Wash Putty
1x Standard Package Putty, 1x 48 ml Cartridge Light Body Regular, 1x 48 ml Cartridge Extra Light Body Regular, 12x mixing Tips, 12x intra-oral Tips, 1x Box Impression Separation Wafers, 1x Adhesive Tray

900475 GC EXA'lence, Technic Kit 1-step Heavy 370 mL
1x 370 ml Cartridge Heavy Body Regular, 1x 48 ml Cartridges Light Body Regular, 1x 48 ml Cartridge Extra Light Body Regular, 10x Dynamic

GC Tray Adhesive

The inside of all trays whether perforated or not, should always be coated with GC Tray Adhesive in order to help prevent 'pull-away' and distortion when removing the tray. Use of a tray adhesive also helps to direct polymerisation and thermal shrinkage toward the tray walls, instead of towards the centre.



Exabite II

Support your dental technician not only with superior impressions by using EXA'lence, but also with a high quality registration of your patient's bite. Exabite II is a well established bite registration material from GC that has been especially developed for occlusal registration. Exabite II is a vinyl polysiloxane impression material that has significant handling and accuracy advances, extrudes easily and sets very quickly.



GC UNITED KINGDOM Ltd. 12–15, Coopers Court Newport Pagnell UK – Bucks. MK16 8JS
Tel. +44.1908.218.999 Fax. +44.1908.218.900 info@uk.gceurope.com www.uk.gceurope.com

GC EUROPE N.V. Head Office Researchpark Haasrode-Leuven 1240 Interleuvenlaan 33 B-3001 Leuven
Tel. +32.16.74.10.00 Fax. +32.16.40.48.32 info@gceurope.com



EXA'lence™ from **GC**
The next generation
impression material



For precision
performance
and outstanding
results. For perfect
impressions under
all conditions – time
and time again.

The Next Generation Impression Material

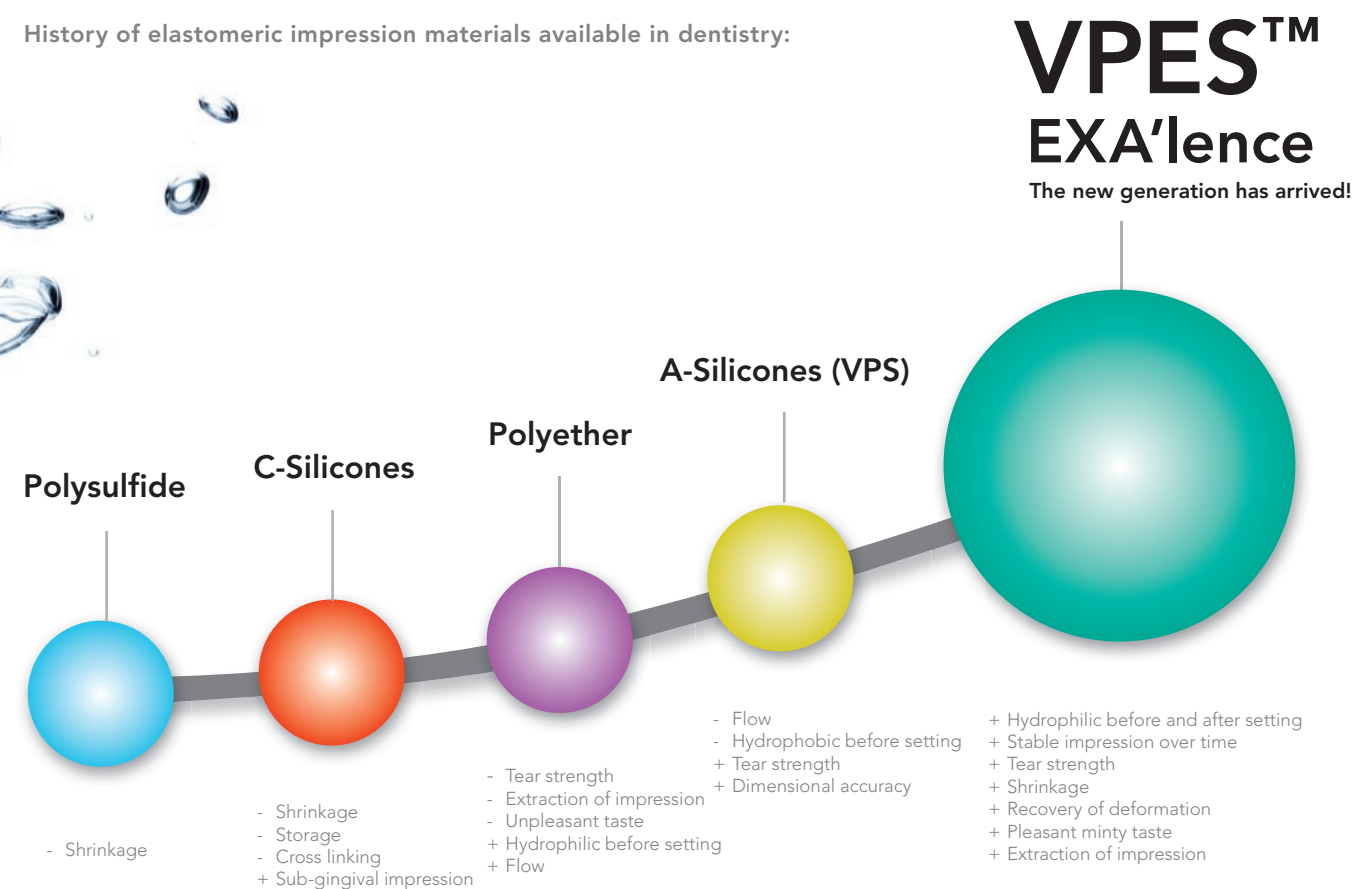
With its extensive background in chemistry and creating solutions for dentistry, GC has harnessed the best qualities of two advanced materials to form the next generation impression material: **Vinyl Polyether Silicone (VPES™)** impression material.

EXA'lence is GC Europe's solution for **precise and detailed reproduction**. Inside the mouth, the environment can be **unpredictable and wet** but you can always rely on **EXA'lence** for precise impressions every time.

EXA'lence offers you:

- Intrinsically hydrophilic composition
- Superior flow in the sulcus
- Superior elasticity without deformation
- High tear strength
- Pleasant mint taste

History of elastomeric impression materials available in dentistry:



One material, a multitude of options

