



... the aesthetic solution for
periodontally compromised patients



everStick®PERIO
from GC

Fibre reinforcement
for periodontal splinting

GC



everStick®PERIO

... the aesthetic solution
for periodontally compromised patients



Periodontal splinting with everStickPERIO can be successfully used as part of a periodontal treatment. It has been shown that teeth with healthy, but severely reduced periodontium can be **maintained with the aid of a splint**. With everStickPERIO, **you can choose between a rigid or a more flexible splint to adapt to the clinical situation**. If the splint is bonded interdentally, you will get a more rigid splint, for instance indicated in case of a fractured root. Another advantage is that the splint can be easily remodeled if needed.

Aesthetic

Minimally invasive

Reliable



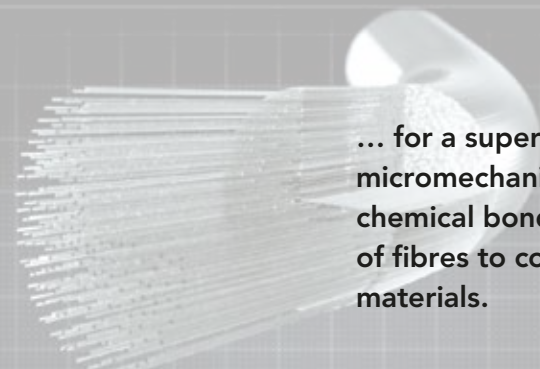
Prof. Peumans, Belgium

Why does everStickPERIO guarantee your patient the ideal splint?

Unique product characteristics together with extensive research background and long clinical experience make everStickPERIO **an unparalleled splinting solution in terms of strength and reliability**. everStick fibres have a **flexural strength as high as that of cast chromic cobalt metal**, but their **elastic modulus is very close to that of dentin**. This elasticity may be **beneficial to the surrounding periodontal tissue** because the loads are spread more naturally than in a totally rigid construction such as a metal contention.



Featuring the unique
patented IPN* structure...



... for a superior
micromechanical and
chemical bonding
of fibres to composite
materials.

* Interpenetrating Polymer Network

This Technology is based on the ability of the polymer matrix (PMMA and bis-GMA) to partially dissolve in the resin used for bonding, for a stronger final restoration.

Superior durability

Effective support

Comfortable

Easy to remove

No torsional stress

How to combine a periodontal splint with a diastema closure?



Initial Situation

TIP! The retainer should be placed as close as possible to the incisal edges, while considering the occlusion.



Etching

TIP! It is preferable to etch a slightly wider area than necessary, rather than too small. The use of a rubber dam is recommended.



Bonding

TIP! The entire length of the splint must be bonded to the tooth surfaces.



Light-curing

TIP! The interdental spaces can be also bonded to achieve a more rigid splint.



Applying G-aenial Universal Flo

TIP! G-aenial Universal Flo should be applied in a continuous layer. Do not light-cure at this stage!



Placing the fibre

TIP! Press the fibre into the approximal areas as well, making sure that the interdental spaces are not blocked.



Covering with G-aenial Universal Flo

TIP! After the fibre has been initially cured, cover with flowable composite and make sure it is totally enclosed.

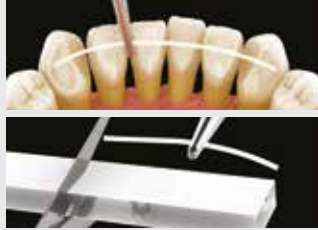
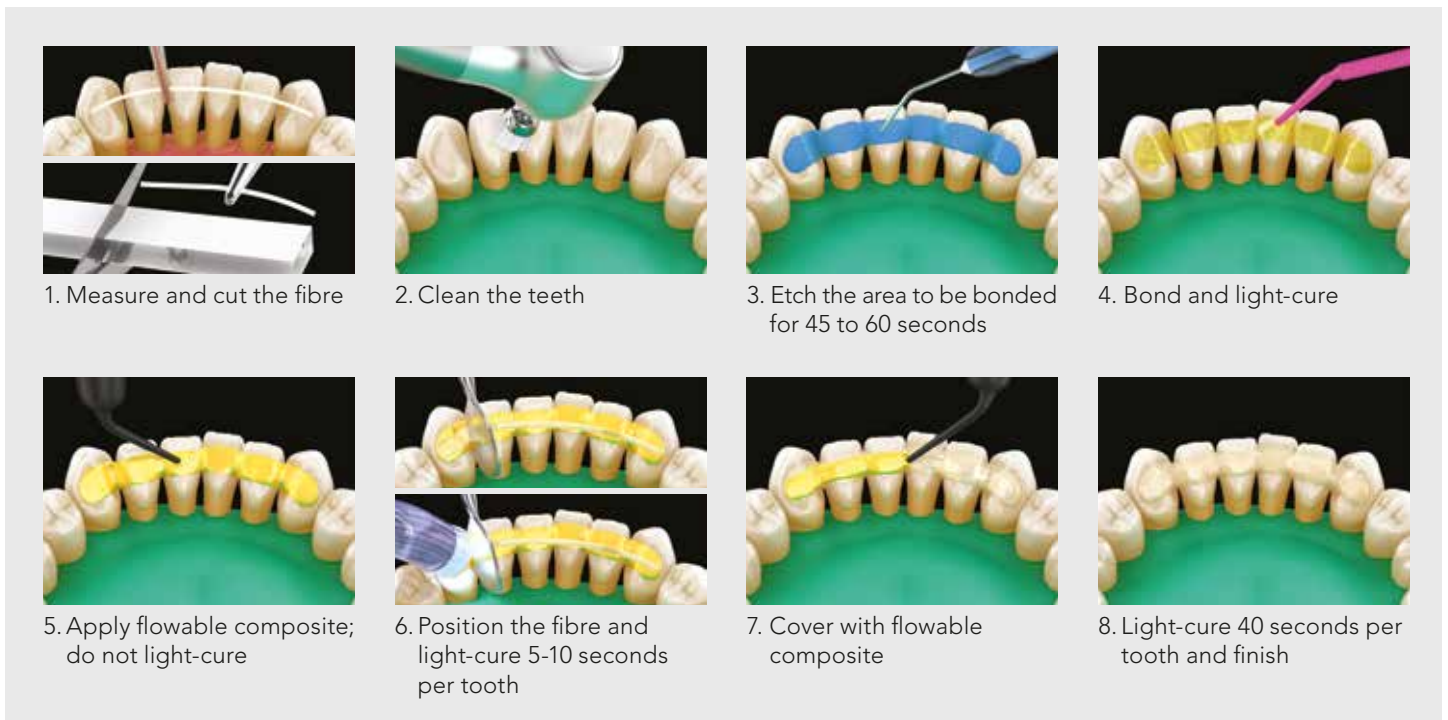


Final case

TIP! G-aenial Universal Flo (the flowable composite used to place the fibre) can also be used to close the diastema.

Road to Success...

...to create an aesthetic and reliable periodontal splint



1. Measure and cut the fibre



2. Clean the teeth



3. Etch the area to be bonded for 45 to 60 seconds



4. Bond and light-cure for 45 to 60 seconds



5. Apply flowable composite; do not light-cure



6. Position the fibre and light-cure 5-10 seconds per tooth



7. Cover with flowable composite



8. Light-cure 40 seconds per tooth and finish

Packages



900822 everStickPERIO 2x12cm refill

900832 everStickPERIO 1x8cm refill

Related products



GC G-ænial® Universal Flo



GC G-ænial® Bond

everStickPERIO	
Form	Unidirectional bundle of E-glass fibres
Diameter	~1.1-1.3mm
Amount of fibres	~2000 individual glass fibres per bundle

GC EUROPE N.V.
 Head Office
 Researchpark Haasrode-Leuven 1240
 Interleuvenlaan 33
 B-3001 Leuven
 Tel. +32.16.74.10.00
 Fax. +32.16.40.48.32
 info@gceurope.com
<http://www.gceurope.com>

GC UNITED KINGDOM Ltd.
 12-15, Coopers Court
 Newport Pagnell
 UK-Bucks. MK16 8JS
 Tel. +44.1908.218.999
 Fax. +44.1908.218.900
 info@uk.gceurope.com
<http://uk.gceurope.com>

