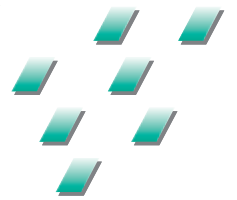


EQUIA Forte from GC



The glass hybrid
innovation for patients
from 7 until 77
and even beyond



GC

The proven EQUIA approach,

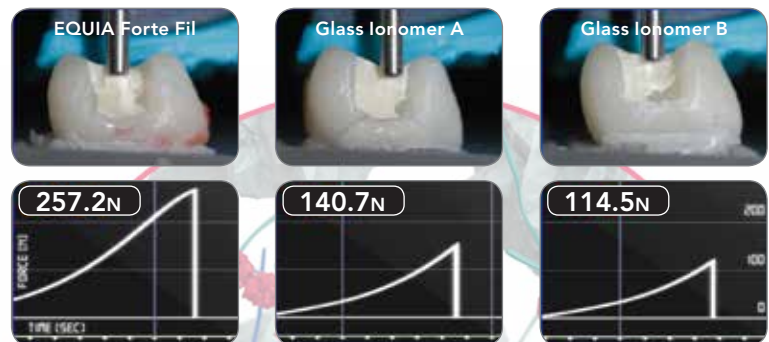
EQUIA Forte is the next innovation in GC's glass ionomer and resin technologies with EQUIA Forte Fil and EQUIA Forte Coat, working in synergy. United they build a stronger, superior posterior bulk fill material.

This unique restorative system for all age groups will impress you on all levels. The impressive aesthetics widen your posterior restorative options to fulfil your patients' expectations. Based on the EQUIA system, clinically proven over several years, EQUIA Forte offers a great alternative for your daily routine.

Glass Hybrid inside

EQUIA Forte Fil is a fast setting, aesthetic restorative with an increase in physical properties, achieved through the introduction of novel Glass Hybrid technology. A new, ultrafine, and highly reactive glass is dispersed within the glass ionomer fillers to accelerate and enhance matrix formation after mixing. This innovative glass hybrid technology increases the ion availability and builds a much stronger matrix structure with greater physical properties, wear resistance and fluoride release.

Resistance to fracture



Source: University of Zagreb

Bonds naturally

No need for conditioning or bonding with its built-in universal adhesive technology and outstanding wettability. EQUIA Forte is moisture tolerant and bonds equally well to all surfaces independent of the age of the teeth. From young enamel up to sclerotic dentin ... with EQUIA Forte you do not need to adapt your procedures.

Another advantage is that it sets with almost no stress or shrinkage.

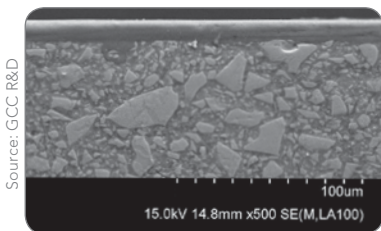


Built-in universal adhesive



taken to the next level

Tough synergy



Thin flowing EQUIA Forte Coat



End result

With EQUIA Forte Coat acting like a thin flowing lustre coating, the translucency and aesthetics are improved. Featuring new cross-linking monomer chemistry and GC's patented mono-dispersion nano-filler technology, EQUIA Forte Coat completes the restoration. EQUIA Forte Coat is brush applied and light cured to form a highly wear resistant, self-adhesive laminate providing a smooth, sealed surface with remarkable strength and impressive wear resistance.

Truly innovative

Working in synergy with modern MI dentistry concepts, these high technology materials create EQUIA Forte, a truly innovative biomimetic, fluoride releasing restorative system which is very quick and simple to place. Based on glass ionomer technology, EQUIA Forte is pulp friendly and can be used in deep cavities. The handling is trouble free and independent from age or site of the restoration. Prepare, bulk fill, finish, coat, light-cure ... a few easy steps to perfect results.



Deep cavity

Clinically proven

EQUIA Forte builds on the impressive clinical trial performance of the original EQUIA system and presents as a viable alternative for the restoration of posterior teeth. With its new glass hybrid technology, EQUIA Forte extends the recommendation of use in Class II cavity preparations (without cusps).



Extended cavity design



A few easy steps to perfect results

Thin flowing lustre coating

Pulp friendly and can be used in deep cavities



Results from the Greifswald University (Germany) clinical trial showed that at 4 years, EQUIA fillings show fracture rates of less than 3%. Another clinical trial done at Hacettepe University (Turkey) showed that both EQUIA and a modern micro filled resin hybrid composite perform clinically similar after 4 years.*

* Gurgan et.al, Operative Dentistry, 2015, 40-1

EQUIA Forte at a glance

- The system doesn't require any layering, is non sticky and packable, and adapts nicely to the cavity walls
- With hardly any shrinkage stress, EQUIA Forte can be called a real bulk fill material even for deep cavities
- The use of a rubber dam is optional and the chemical adhesion eliminates complicated bonding procedures
- No need for any complex finishing and polishing since only a single application of EQUIA Forte Coat is required
- Brilliant shine and smooth surfaces with a durable, natural gloss easier than ever before
- Total procedure time of around 3,5 minutes*
- Increased strength of the glass ionomer over time due to the unique maturation effect, attributed to saliva
- Extended indications of use compared with EQUIA



EQUIA
FORTE

The EQUIA Forte system is available in a variety of single and combination packages, consisting of capsules of EQUIA Forte Fil and a bottle of EQUIA Forte Coat. EQUIA Forte Fil is available in the following Vita® shades: A1, A2, A3, A3,5, B1, B2, B3 and C4.

*Processing times are based on experiences of the manufacturer



GC EUROPE N.V.
Head Office
Researchpark
Haasrode-Leuven 1240
Interleuvenlaan 33
B-3001 Leuven
Tel. +32.16.74.10.00
Fax. +32.16.40.48.32
info@gceurope.com
http://www.gceurope.com

GC UNITED KINGDOM Ltd.
12-15, Coopers Court
Newport Pagnell
UK-Bucks. MK16 8JS
Tel. +44.1908.218.999
Fax. +44.1908.218.900
info@uk.gceurope.com
http://uk.gceurope.com

GC